

Fig. 1: Adjustable Mast Bracket BOM

ITEM	QTY	DESCRIPTION
1	2	MAST BRACKET, CLAMP, B65
2	1	MAST BRACKET, TILT, ADJUSTABLE, MBK-01
3	1	MAST BRACKET, HINGE, ADJUSTABLE, MBK-01
4	1	MAST BRACKET, HINGE, FIXED, MBK-01
5	4	THREADED ROD, M12X1.75, 250L, DIN 975, CLASS 8.8
6	6	SCREW, HEX, CAP, M12X1.75, 40L, DIN 933, CLASS 8.8
7	18	WASHER, FLAT, M12, 37 OD, MIN 2.3 THK, DIN 9021, STEEL
8	14	WASHER, SPLIT LOCK, M12, DIN 127B, STEEL
9	28	NUT, HEX, M12X1.75, DIN 934, CLASS 8

Step Task

- 1 Attach the fixed mast bracket to the bottom mounting brace for downtilt, or top mounting brace for uptilt, as shown in Fig. 2 and 3. Refer to the materials list shown in Fig. 1 to properly identify the required items.
- 2 Attach the adjustable mast bracket to the top mounting brace for downtilt, or bottom mounting brace for uptilt, as shown in Fig. 4 and 5. Refer to the materials list to properly identify the required items.
- 3 Adjust the position of the threaded rod on the antenna side of brackets as required. Torque nuts to 54 N·m (40 ft-lbs).

Fig. 2: Fixed Mast Bracket

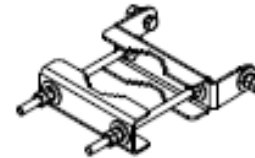


Fig. 3: Fixed Mast Bracket Attached To The Array

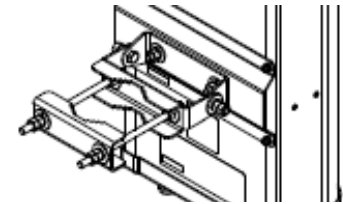


Fig. 4: Adjustable Mast Bracket



Fig. 5: Adjustable Mast Bracket Attached To The Array

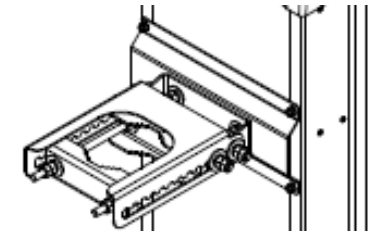
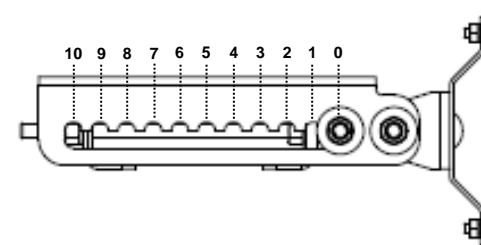


Fig. 6: Detail Of Adjustable Tilt Bracket



Step Task

- 4 Lift the antenna up to the mast location to continue assembly.
- 5 Align the antenna in the direction specified by the site engineer. The orientation of the antenna is normal to the sector unless specifically required otherwise. The antenna is vertical at a 0° tilt setting. Increments 0 through 10 correspond to degrees of mechanical tilt as shown in Fig. 6.
- 6 Secure the antenna to the mast and torque all mounting fasteners to 54 N·m (40 ft-lbs). Refer to Antenna Installation Guide.

DISCLAIMER:

The installation, maintenance, or removal of an antenna requires qualified, experienced personnel. You must refer to the appropriate local safety codes and ensure proper electrical and electromagnetic compatibility before proceeding with the installation. All local codes shall take precedence over information in this document. Antenna systems should be inspected once a year by qualified personnel to verify proper installation, maintenance, and condition of equipment. Communication Components Antennas Inc. disclaims any liability or responsibility for the results of improper or unsafe installation.