



# Product News

## ANTENNAS

### True 4T4R Low Band Twelve Port Antenna (TPA) Product Series

CCI is proud to announce the **TPA65R-KExD** product family, delivering four (4) full length ultra-wide band low band ports and eight (8) full length ultra-wide high band ports.

When using a diplexed radio with four (4) low band radio ports, both 700MHz and 800MHz platforms can be supported on a single antenna, thus reducing antenna count, structural and wind load constraints, while providing 4T4R for critical network services.

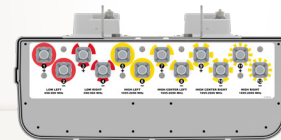
The **TPA65R-KExD** product family uses the industry's first, full length high band columns, instead of traditional stacked high band columns typical to most twelve port antennas. This unique array configuration provides superior network performance with industry leading Sector Power Ratio (SPR)% across all bands to reduce cell overlap, which minimizes network noise, critical for LTE data throughput rates.

The **TPA65R-KExD** product family offers three TRUE height options of 48", 72" and 96". The 48" antenna is the shortest 4T4R low band capability antenna in the industry with the industry's first full length high band arrays.



### KEY FEATURES & BENEFITS True 4T4R Twelve Port Antenna Product SERIES

- 4T4R low band and multiple 4T4R high band configurations in one antenna
- Provides full length high band columns, offering unparalleled network performance
- 12 ports of full spectrum compliance 698-960 MHz/ 1695-2690 MHz and all subsequent sub-bands
- Industry leading SPR%, reducing cell overlap and minimizing network noise and allowing for higher data throughput rates



True 4T4R Twelve Port  
(TPA) Series  
TPA65R-KExD

### 4T4R Low Band Twelve Port Antenna (TPA) Product Series

CCI Model / Part	Dimensions (L x W x D)	EDT / RET Configuration	Low Band Ports	High Band Ports
<a href="#">TPA65R-KE4D</a> TPA65R-KE4DA-K	48.0" x 21.0" x 7.8"	Type 1 1 RET LB 2 RET HB	4 Wide Band 698-960 MHz	8 Wide Band 1695-2690 MHz
<a href="#">TPA65R-KE6D</a> TPA65R-KE6DA-K	71.2" x 21.0" x 7.8"	Type 1 1 RET LB 2 RET HB	4 Wide Band 698-960 MHz	8 Wide Band 1695-2690 MHz
<a href="#">TPA65R-KE8D</a> TPA65R-KE8DA-K	96.0" x 21.0" x 7.8"	Type 1 1 RET LB 2 RET HB	4 Wide Band 698-960 MHz	8 Wide Band 1695-2690 MHz

*CCI antennas are deployed worldwide and engineered using the latest design techniques that provide optimal performance and multiple technologies in a single antenna . . .reducing tower load, lease expense and deployment /installation expense while providing unique solutions that enhance performance and increase capacity to address the ever-changing demands on carrier network.*



ANTENNAS Product News

---



**CCI**

Communication Components Inc.

EXTENDING WIRELESS PERFORMANCE

---

89 Leuning Street | South Hackensack NJ 07606 | 201-342-3338 | [www.cciproducts.com](http://www.cciproducts.com)

© 2018 CCI All rights reserved. Specifications are subject to change.

PN 1002-180830