



# Product News

## ANTENNAS

### 4x4 MIMO Multibeam (MBM) 6 Beam Product Series

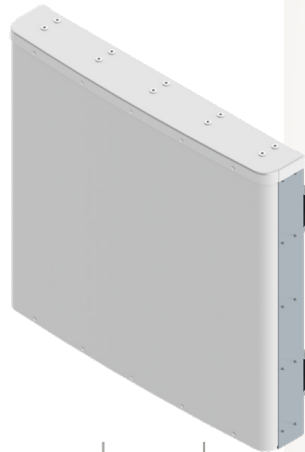
CCI is proud to announce a major innovation and product addition to our Multibeam Antenna portfolio of products. The industry's first Multibeam Panel Antenna, with full 4x4 MIMO capability. The CCI Multifunction Multibeam Antenna contains 6 independent LTE optimized beams with 4x4 MIMO capability or 12 independent LTE optimized beams with 2x2 MIMO capability or any other combination of 4x4 MIMO/2x2 MIMO deployment, providing unparalleled frequency and MIMO configuration capability.

The CCI Multifunction Multibeam Antenna, with 4x4 MIMO deployed on any of the available beams greatly enhances capacity and data throughput over conventional 2x2 MIMO deployments. Spectrum reuse through sectorization is also improved over conventional 2x2 MIMO multibeam deployments.

CCI's LTE optimized beam design provides fast roll-off between beams, minimizing interference between sectors thus increasing the carrier interference noise ratio (CINR) and lowering soft handover losses in LTE networks. This approach enhances data transfer rates within LTE network sectors and addresses "hot spots" in mobile wireless networks.

#### KEY FEATURES & BENEFITS 4x4 MIMO MBM SERIES

- First 4x4 MIMO Multibeam Antenna
- Capable of 4x4 and/or 2x2 MIMO configurations
- Supports up to six (6) 4T4R or twelve (12) 2T2R eNodeB (eNB) Radios
- Greatly enhances capacity and data throughput
- 24 ports of full spectrum compliance 1695-2690 MHz and all subsequent sub-bands



4 x 4 MIMO  
MBM 6 Beam Series  
MBM6F-xxx



#### 4x4 MIMO Multibeam Antenna—MBM 6 Beam Series

CCI Model / Part	Dimensions (L x W x D)	EDT / RET Configuration	Low Band Ports	High Band Ports
MBM6F-E3B MBM6F-E3BA-K	40.0" x 42.5" x 7.1"	7° Fixed EDT	NA	24 Wide Band 1695-2690 MHz
MBM6F-P3B MBM6F-P3BA-K	40.0" x 42.5" x 7.1"	7° Fixed EDT	NA	24 Wide Band 1850-1995 MHz
MBM6F-U3B MBM6F-U3BA-K	40.0" x 42.5" x 7.1"	7° Fixed EDT	NA	24 Wide Band 1695-2400 MHz
MBM6F-W3B MBM6F-W3BA-K	40.0" x 42.5" x 7.1"	7° Fixed EDT	NA	24 Wide Band 1695-2180 MHz
MBM6F-V3B MBM6F-V3BA-K	37.4" x 31.3" x 6.4"	5° Fixed EDT	NA	24 Wide Band 2300-2690 MHz

*CCI antennas are deployed worldwide and engineered using the latest design techniques that provide optimal performance and multiple technologies in a single antenna . . .reducing tower load, lease expense and deployment /installation expense while providing unique solutions that enhance performance and increase capacity to address the ever-changing demands on carrier network.*



ANTENNAS Product News

---



**CCI**

Communication Components Inc.

EXTENDING WIRELESS PERFORMANCE

---

89 Leuning Street | South Hackensack NJ 07606 | 201-342-3338 | [www.cciproducts.com](http://www.cciproducts.com)

© 2018 CCI All rights reserved. Specifications are subject to change.

PN 1001-180828